

COVE HOMES COLLECTION

# ACACIA

1-STORY | 2 BEDROOMS | 2 BATHS

2-CAR GARAGE | GREAT ROOM | DEN

1,501 AC SQ. FT. | 2,107 TOTAL SQ. FT.



COVE HOMES COLLECTION

# BIRCH

1-STORY | 3 BEDROOMS | 2.5 BATHS

2-CAR GARAGE | GREAT ROOM

1,726 AC SQ. FT. | 2,321 TOTAL SQ. FT.



COVE HOMES COLLECTION

# CEDAR

1-STORY | 3 BEDROOMS | 3 BATHS

2-CAR GARAGE | GREAT ROOM | DEN

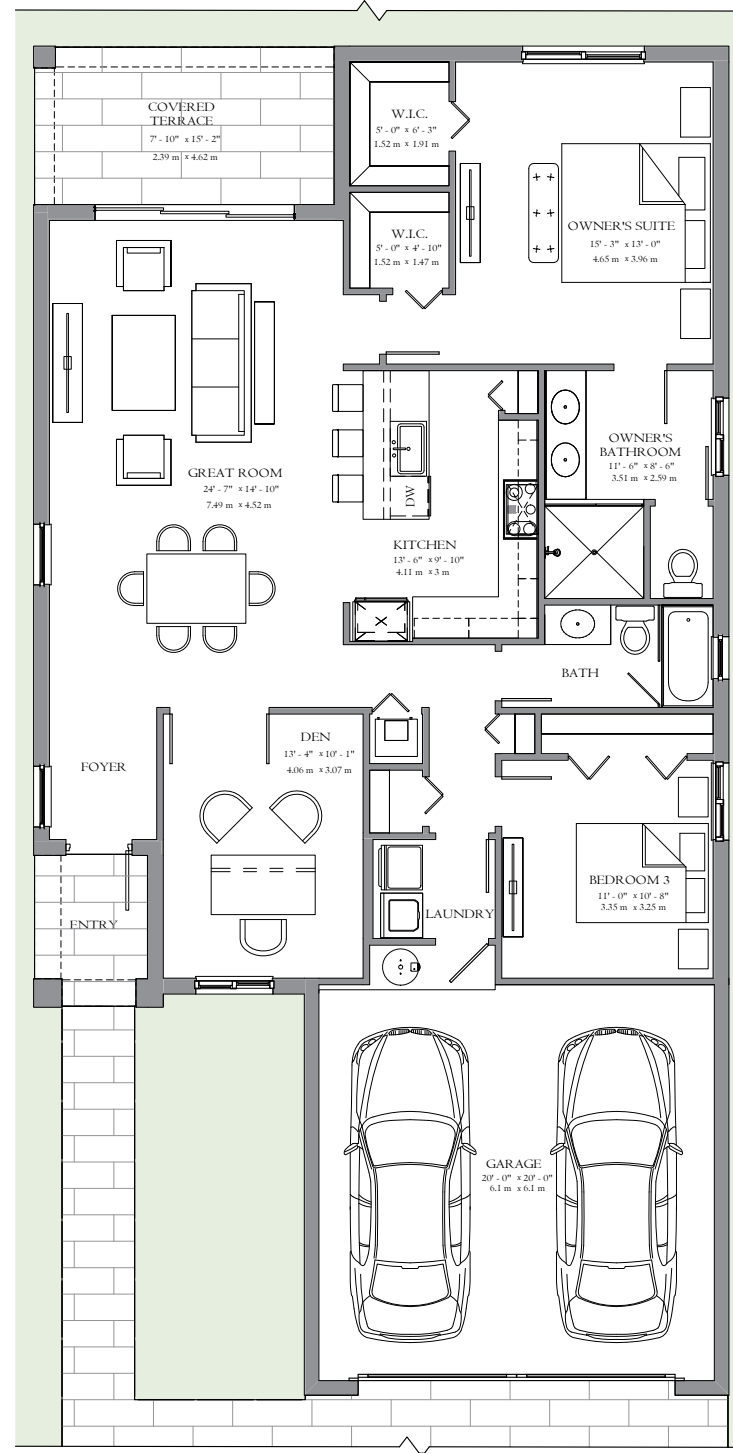
1,918 AC SQ. FT. | 2,568 TOTAL SQ. FT.





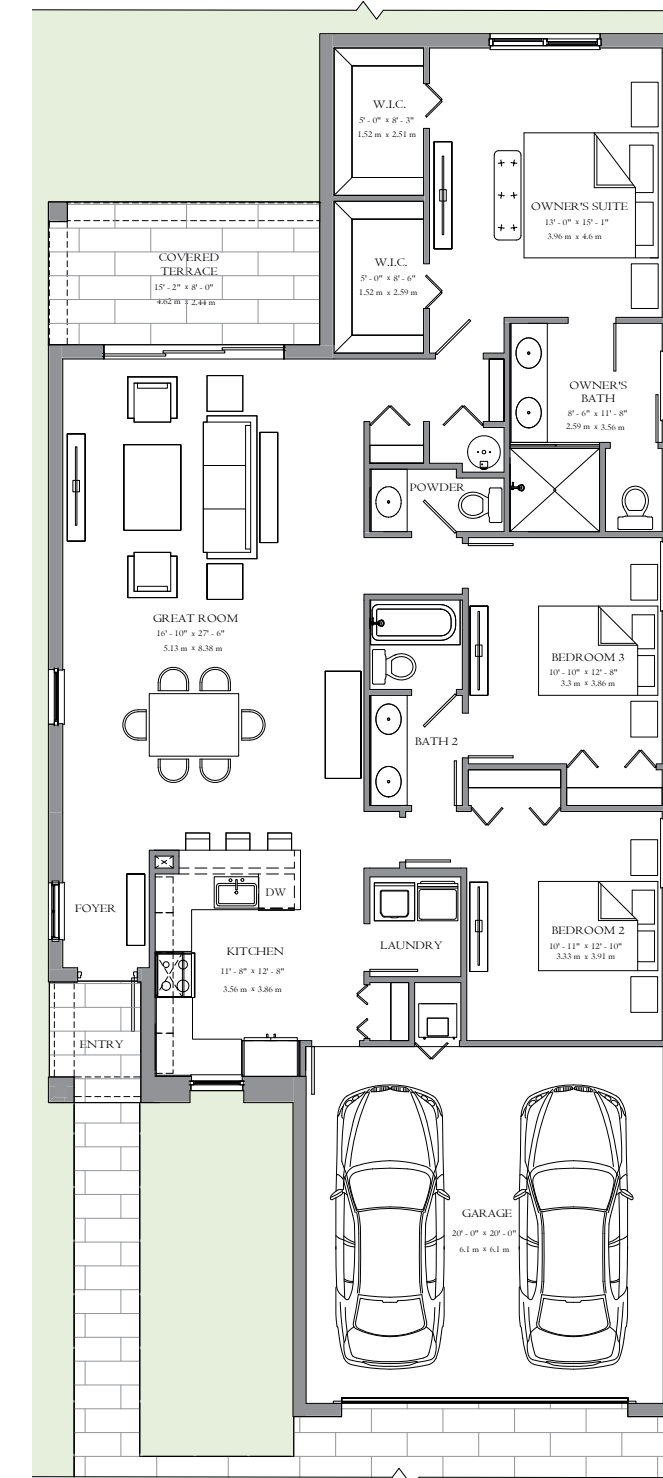
# ACACIA

## FLOORPLAN



# BIRCH

## FLOORPLAN

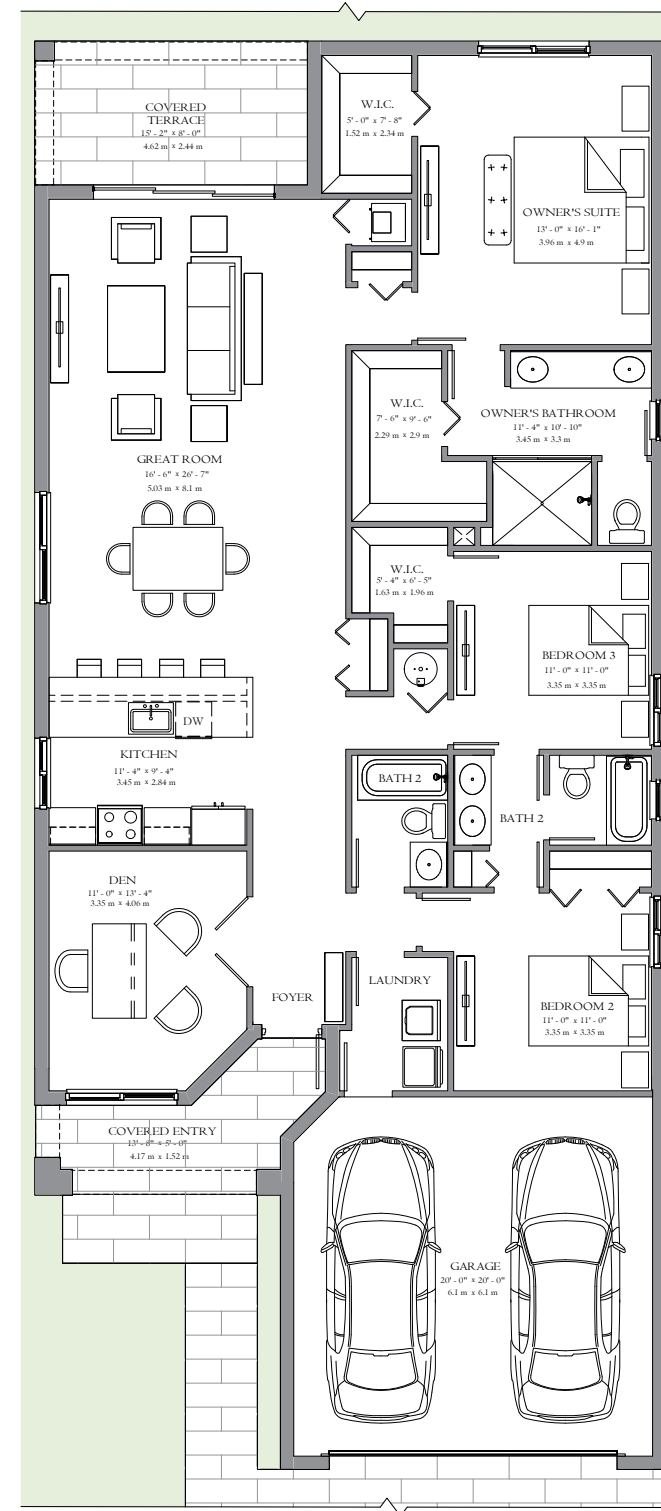


Artist's conception and for the convenience of reference. All dimensions are approximate. The developer reserves the right to change and alter materials, specifications, features, dimensions and designs without notice. Oral representations cannot be relied upon as correctly stating the representations of the developer. Pictures and photographs are solely for illustrative purposes and should not be relied upon when making a decision to purchase a home. Hardscape, landscape and other items shown may be decorator suggestions that are not included in the purchase price and availability may vary. Prices, features, elevations, floor plans and lot details are subject to change without notice.



# CEDAR

## FLOORPLAN



Artist's conception and for the convenience of reference. All dimensions are approximate. The developer reserves the right to change and alter materials, specifications, features, dimensions and designs without notice. Oral representations cannot be relied upon as correctly stating the representations of the developer. Pictures and photographs are solely for illustrative purposes and should not be relied upon when making a decision to purchase a home. Hardscape, landscape and other items shown may be decorator suggestions that are not included in the purchase price and availability may vary. Prices, features, elevations, floor plans and lot details are subject to change without notice.

# COVE FEATURES

## EXTERIOR FEATURES

- Mediterranean style concrete tile roof
- Decorator color scheme and light textured finish
- Brick paver driveway, walkway to home, and covered entry
- Climate-friendly covered entry
- Distinctive exterior door hardware and deadbolt lock
- Lighting at front porch entry
- Decorative coach light at garage
- Impact-resistant garage doors
- Pavers at rear patio
- Front and rear weatherproof (GFI) electrical outlets
- Professionally landscaped and sodded home site
- Automatic sprinkler system
- Two outside hose bibs
- Steel-reinforced concrete block construction
- Vented soffits
- Screens on all operable windows

## INTERIOR FEATURES

- High ceilings
- Light textured finish walls & knockdown ceilings throughout (excluding baths)
- Elegant decorator door hardware throughout
- Decorative 2 1/4" wood door casings
- Oversized 3 1/4" wood baseboards
- 18" x 18" designer tile flooring in foyer, kitchen, laundry room and all bathrooms
- Deluxe wall-to-wall carpeting with padding in all non-tiled areas
- Minimum 150 AMP electrical service
- High efficiency air conditioning system
- Air-conditioned baths, laundry rooms and walk-in closets
- Energy-efficient R-11 garage wall insulation
- Energy-efficient R-30 ceiling insulation (per plan)
- Energy-efficient hot water heater
- Rocker-style electrical switches
- Vinyl-clad ventilated closet shelving
- Marble or Corian® window sills throughout
- Smoke and carbon monoxide detectors (per plan)
- Structured wiring system includes wiring that home-runs to a central distribution panel
- All phone wiring is Category-5 cable and is included in the kitchen and primary bedroom
- Pre-wired for ceiling fans in great room
- Full-sized washer and dryer

## INSIDE YOUR KITCHEN

- Stainless steel appliance package including:
  - Side-by-side refrigerator with ice and water dispenser in the door
  - Ceramic surface range with self-cleaning oven
  - Built-in microwave oven and hood combo with fan and light
  - Multi-cycle dishwasher
  - 1/2 HP garbage disposer
- Contemporary cabinetry with 30" upper cabinets
- Granite or quartz countertops with 4" backsplash
- Stainless steel single bowl undermount sink
- Distinctive single lever faucet with pull out spray feature
- Overhead recessed lighting

## INSIDE YOUR BATHROOMS

- Contemporary European-style cabinetry in all baths
- Granite or quartz vanity tops (per plan)
- 18" x 18" designer tile flooring
- Coordinating tub/shower wall tile package in primary and secondary baths
- Distinctive faucets and coordinated bath accessories
- Elongated water closets
- Exhaust fans
- Full-width mirrors
- Decorator lighting fixtures

All of the included standard features are to be used only for the convenience of reference. The developer reserves the right to change and alter materials, specifications, features and designs without notice.